

CONSERVATION OF CULTURAL HERITAGE

Approaches to management of
heritage in woods and forests in
Great Britain

Netherlands

Mar 2010
Tim Yarnell



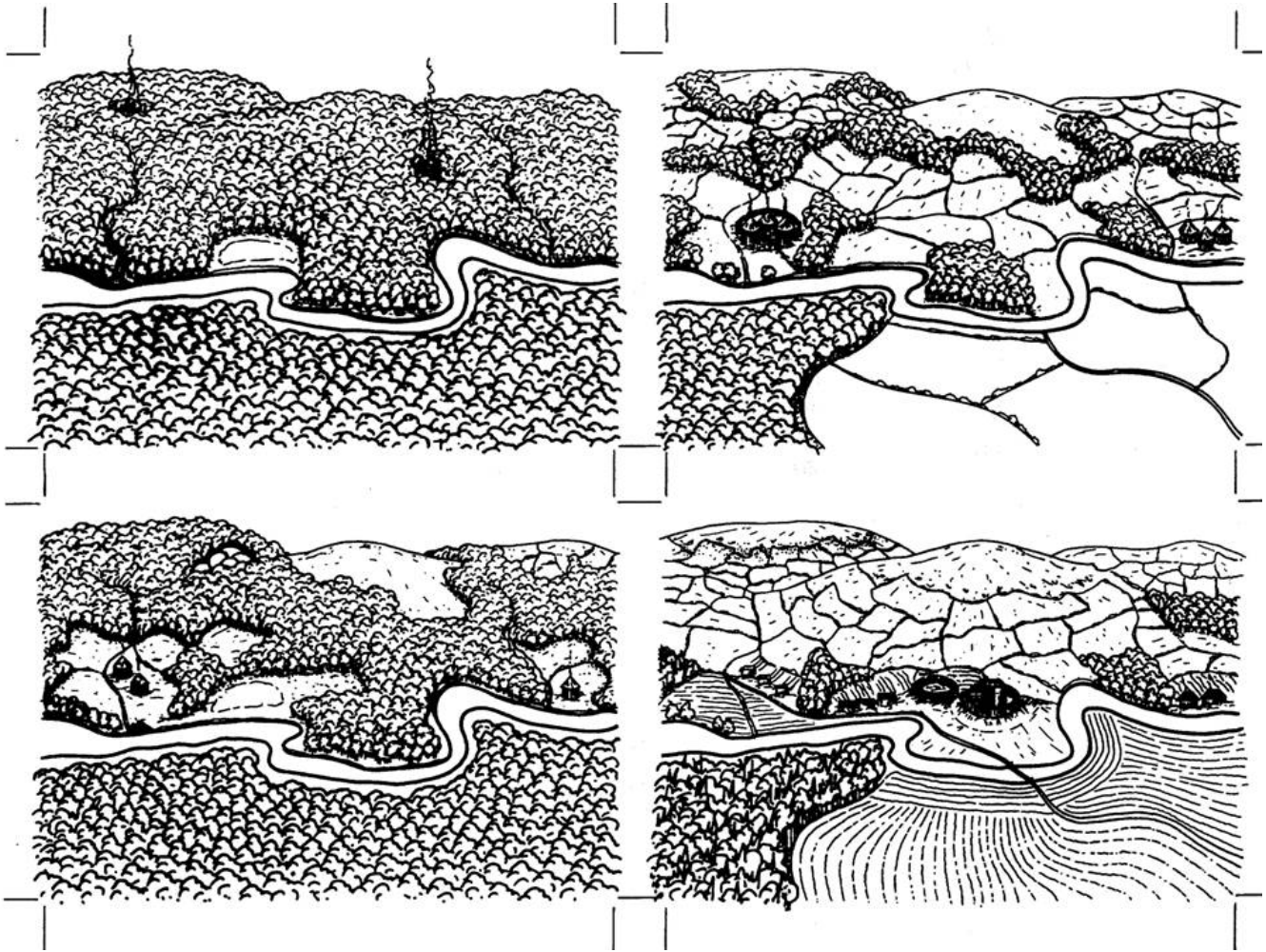
Why does the FC do this ?

Because we are wonderful!

- MCPFE
- UK Forestry Standard
- UKWAS



Primitive Man leaves the trees



Forestry Commission **What we see today**

Historic Environment Planning Guidance

Can you spot all ten historic environment features? Can you rank them in order of importance?



JUST A PILE OF STONES

- Often the only evidence about past societies
- Important part of national identity
- Useful educational and recreation resource
- An entry point to multi-benefit forestry

- Historical record
 - Past people lived
 - Utilising resources
 - Events and association
-

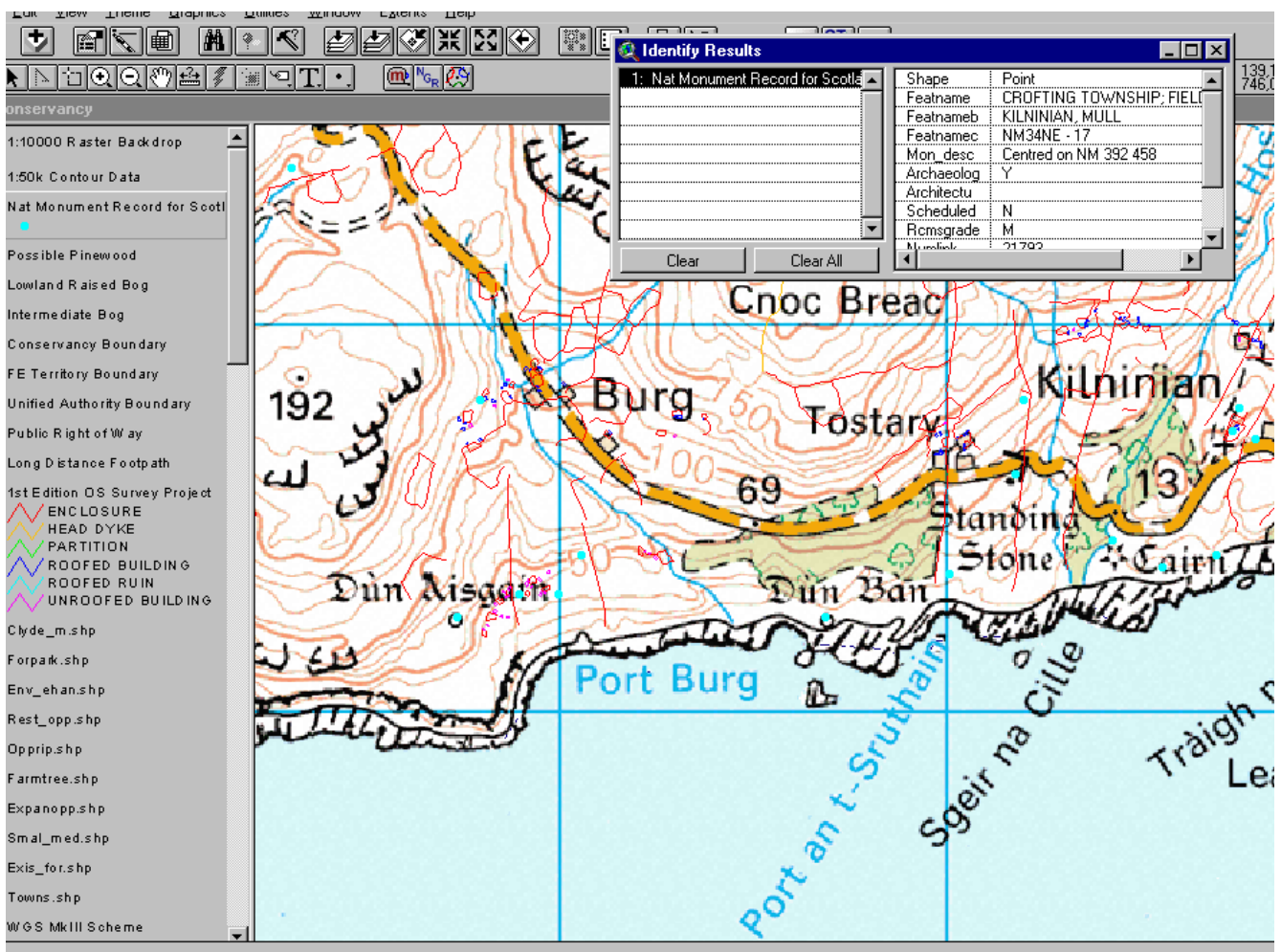
“Of the Woods.....

- Banks and enclosures
- Charcoal Hearths
- Bloomeries
- Veteran trees
- Pasture

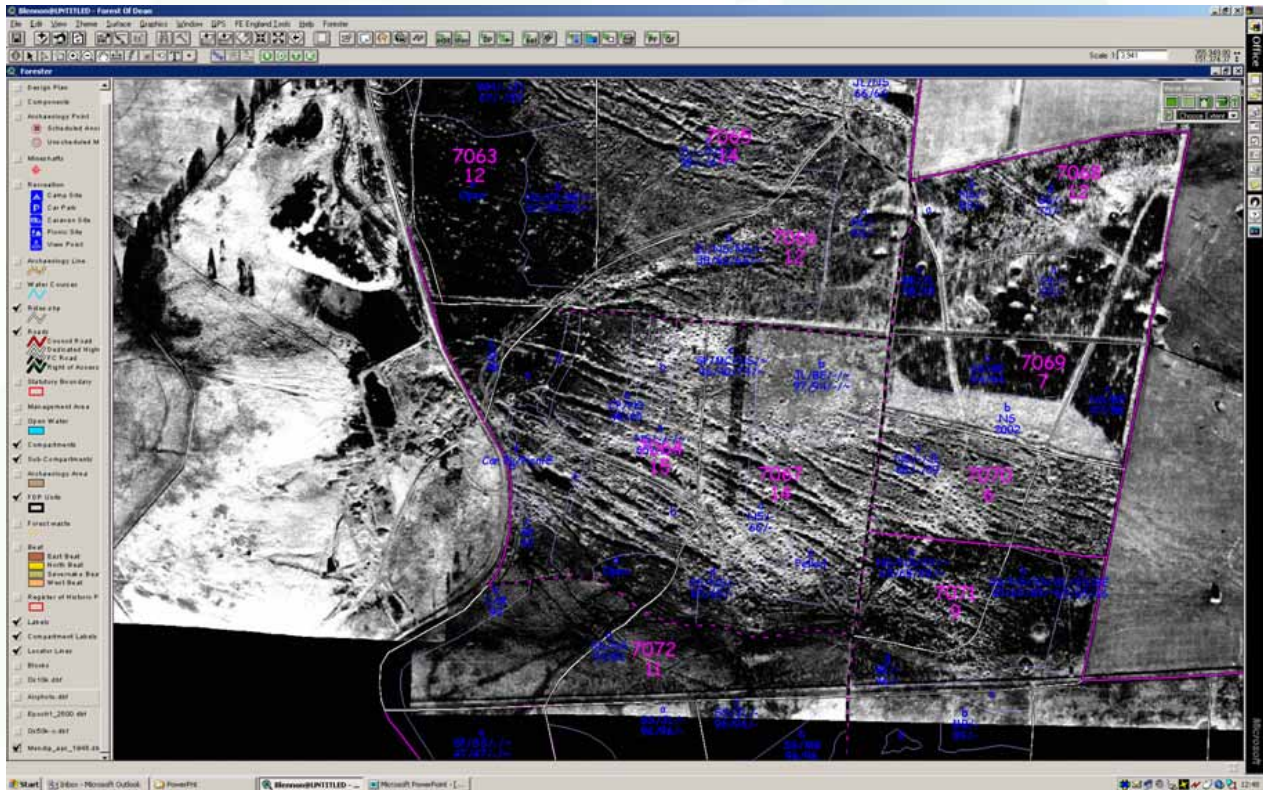
and the land they occupy”

- Settlement
 - Field systems
 - Burial Sites
 - Pottery Kilns
 - Fortifications
-

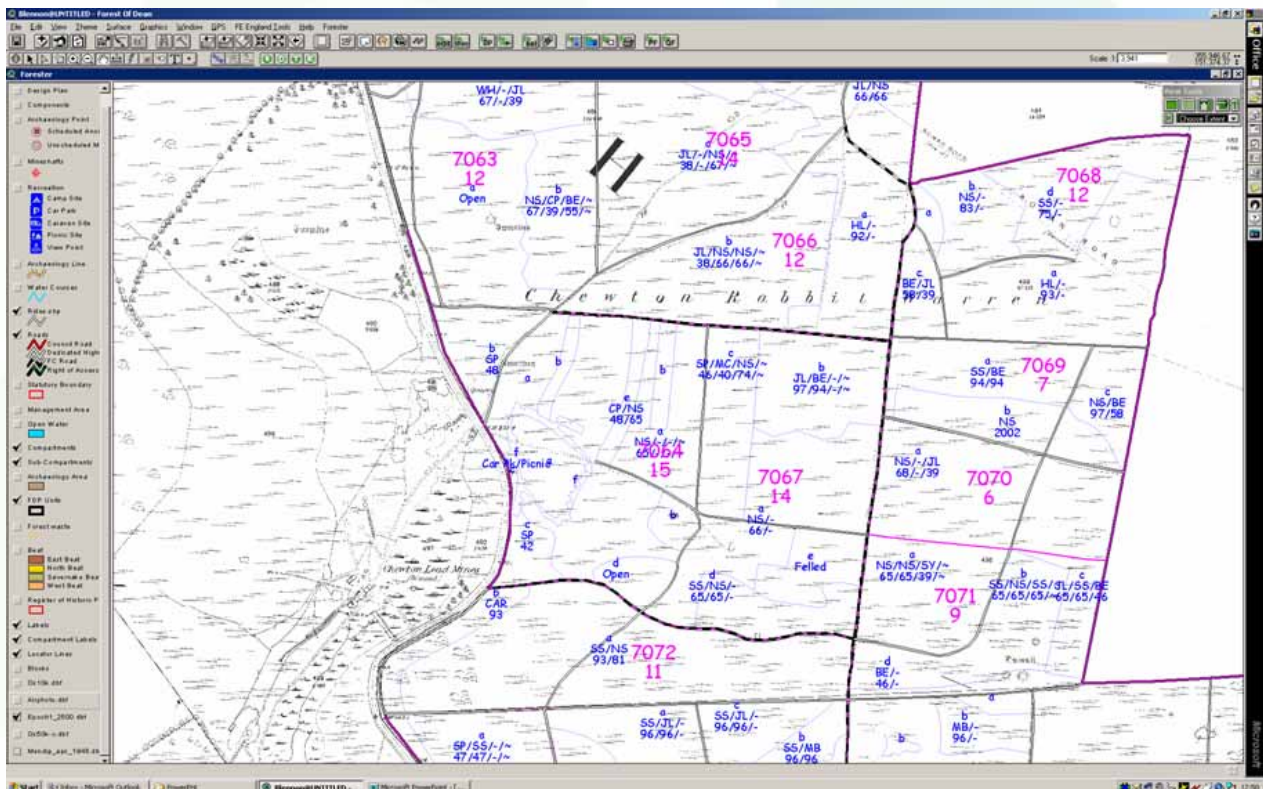
- Stock Map data
- RCAHMS
- SAM
- SMR
- FC staff

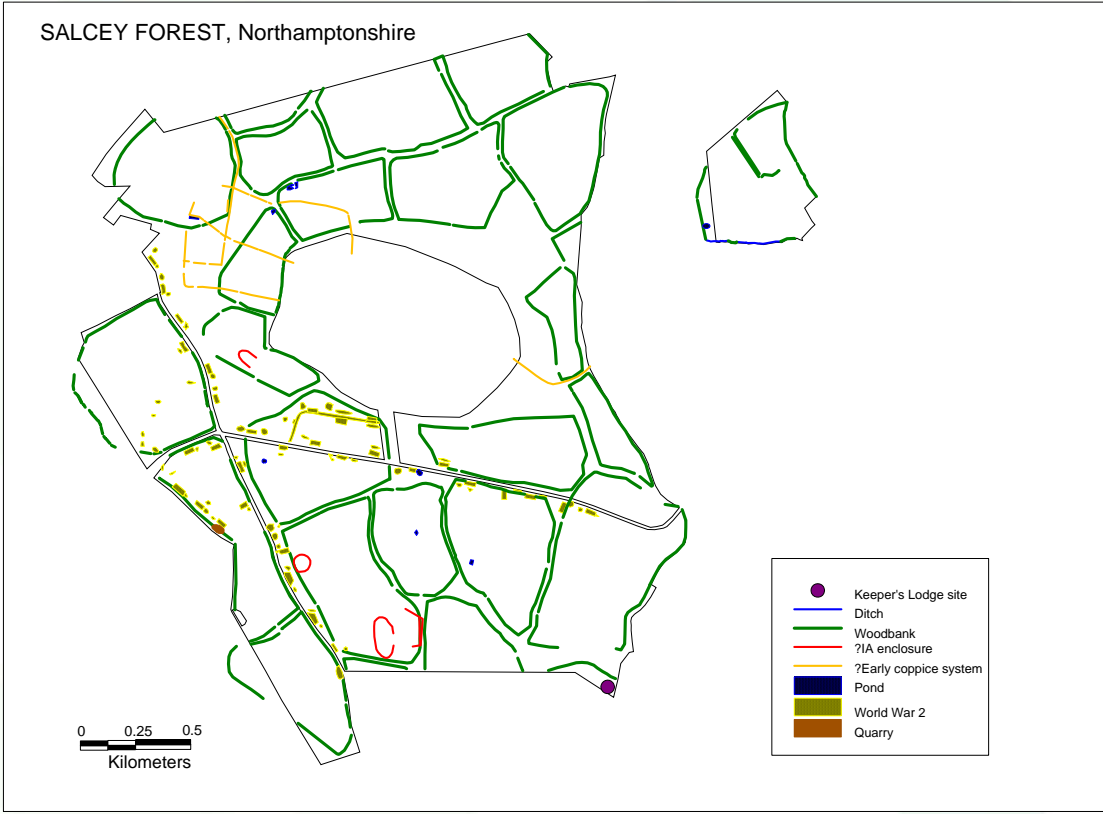


Data from old aerial photographs

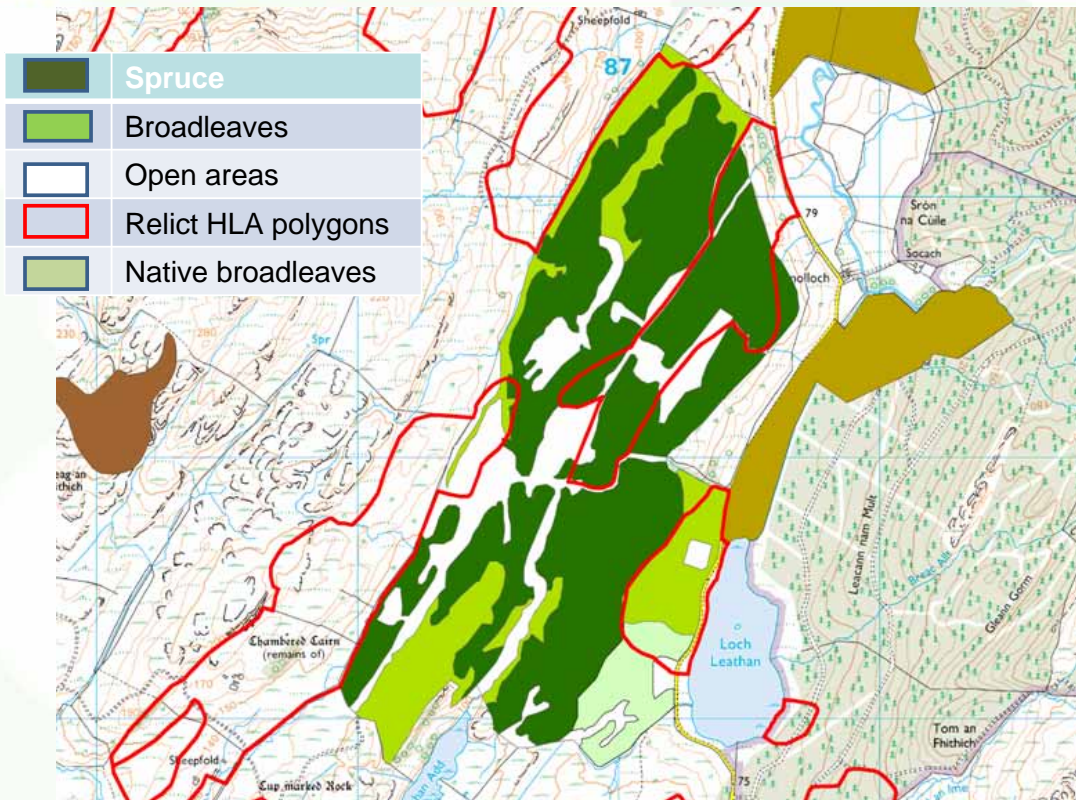



Historical Maps





Historic Land-use Assessment



HLA data: relict areas and proposed planting scheme



Data types for Archaeology

Points

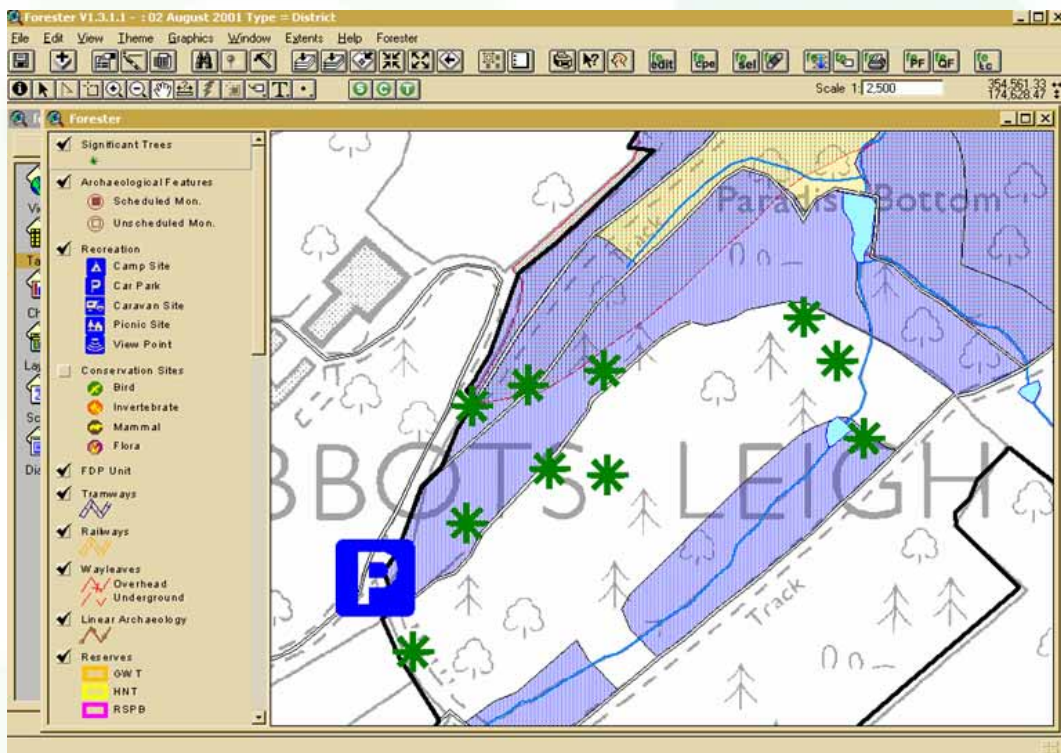
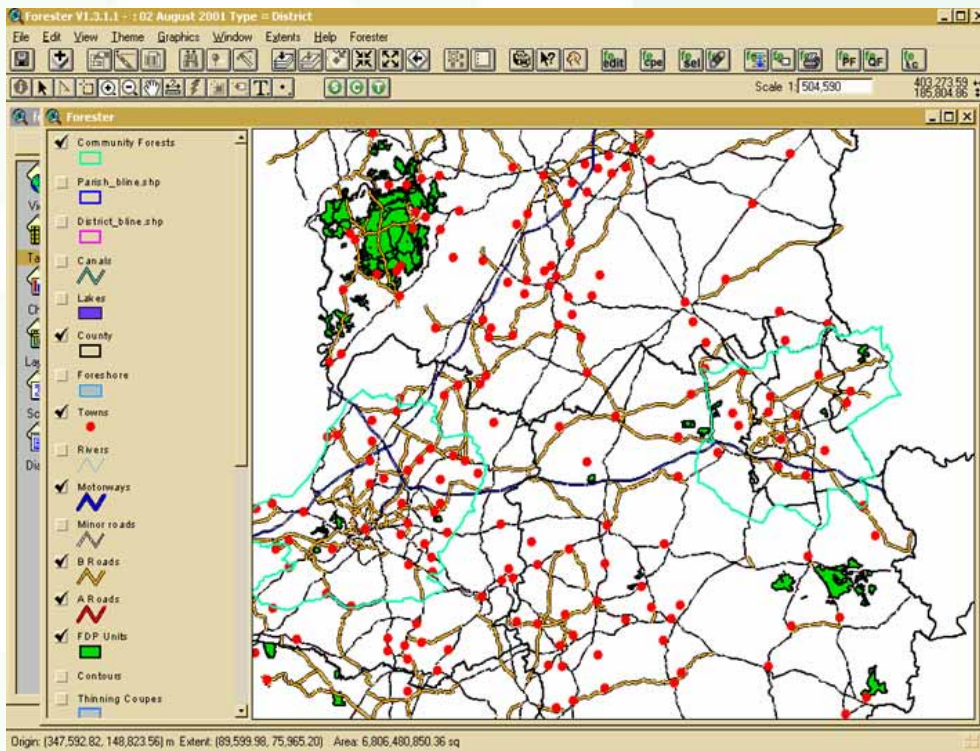
- Small sites
- Mine shafts
- Sites of Finds
- Boundary Stones, Etc

Lines

- Earth Banks
- Tramways & Railways
- Boundaries
- Other Linear Features

Polygons

- Extensive archaeological areas, e.g. Mining, quarrying, Hillforts, designed landscapes, etc.



fo frmslect district : Form

FE DISTRICT Forest of Dean

General Information Historic Parks Register Description **Maplet**

Forest District: Forest of Dean Name: LEIGH COURT

Extent of Historic landscape FE Woodland NB. Not to scale

Record: 1 of 7

Veteran Tree Recording

Forestry Commission

Veteran trees

Forest District in which tree occurs: SOUTH EAST ENGLAND

Species: *Quercus robur* Age: >300 NGR eg. SU 12345 67890 Easting: 412300 Easting and Northing for GIS use

Forest/Site: Example 2 Height (m): 12 see note Approx DBH (cm): Fungal bodies? Sudden dieback? % dieback: 40

Survey Date: 16/01/04

Tree name - if any: Example 2

District Id: Number in group: 4

Form of tree eg. Pollard: Coppice

Landscape setting: Neglected wood pasture

Submitted by: Fred Bloggs

Email: fred.bloggs@forestry.gsi.gov.uk

History - Please enter any known history about the tree

The tree has been managed as coppice in the past. Known locally as the "wishing tree". Believed to have been studied by Gilbert White

Comments - eg. general condition and health of the tree

The shape of the tree make a single DBH measurement impractical. However, the average of the 4 stems is 85 cm. The tree has shown sudden dieback in the past year.

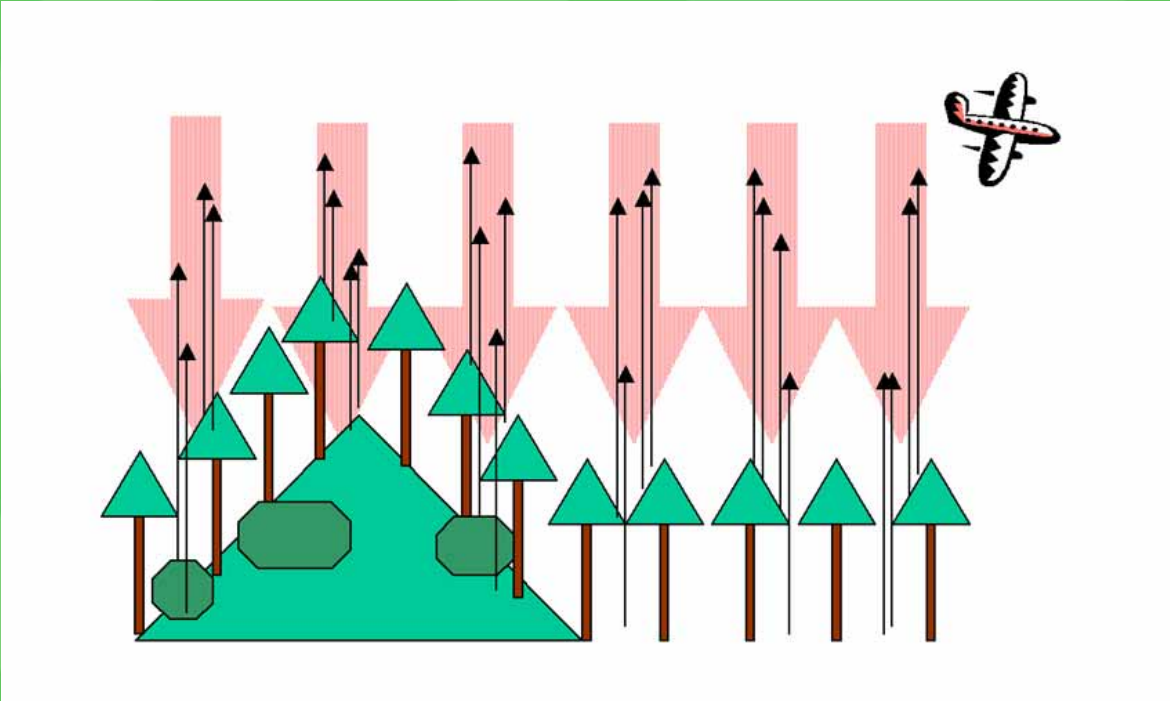
Photograph - double click here to add a jpeg image file (create from file and browse...)

Large image files make the database too large to email.

Please adjust the picture to a resolution of 96 dpi (25 dp cm) with a maximum size of 10 cm. This should create an image of <50 KB. Alternatively, send the image as a separate email attachment.

Add Record

Record: 1 of 2



LIDAR AND WOODLAND



First return data from the LiDAR (from the canopy)



protected content

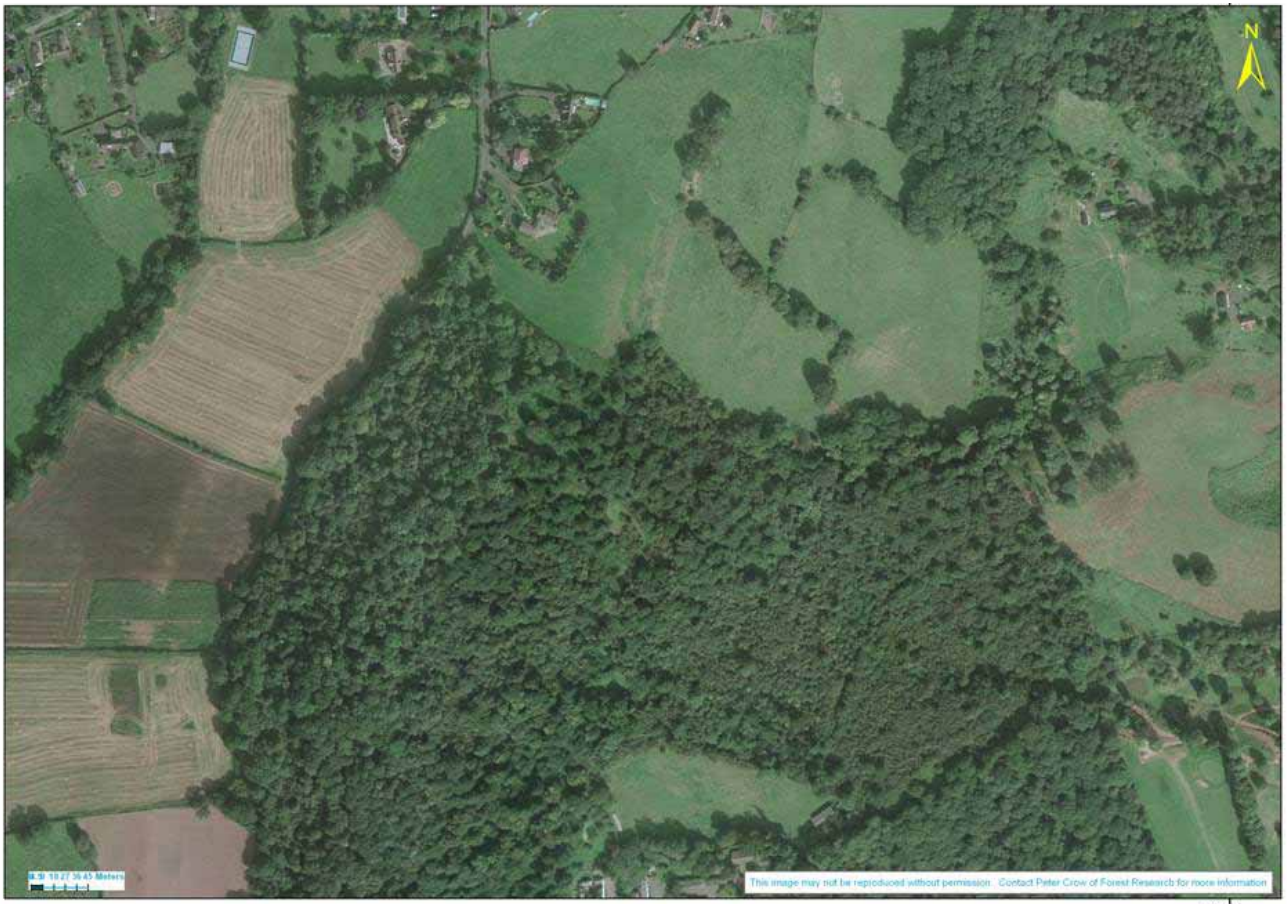
LiDAR data (25cm) following initial processing (vegetation removal)



protected content



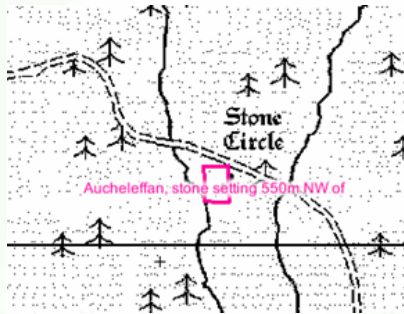
protected content





Category A: national importance

Value	Action	During forestry management, harvesting and FCE operations
National Importance (Scheduled Monuments and Listed Buildings)	Protect and undertake conservation management works. Indicate on all constraints mapping.	In consultation with Historic Scotland and/or the FCS Archaeologist, mark out and avoid, affording an appropriate buffer zone during operations.



SM polygons available on FCS Browser



Late Neolithic 'four poster' stone circle, Arran

Category C: local importance

Value	Action	During forestry management, harvesting and FCE operations
Local Importance: all originally unroofed pre-20th century structures (sheep folds, dykes etc) as any surviving archaeological information is unlikely to be significant; and all possible sites with likely provenance (ie 'possible hut circle').	Protect Indicate on all constraints mapping.	Mark out if necessary (or possible) and avoid unnecessary damage. If necessary for forestry operations, linear landscape features (such as dykes) may be breached (although existing gaps should be used where possible).



Careful harvesting ensured that the walls of this well built and extensive post-Improvement period sheepfold in Glen Affric survived clearfelling operations.

Category D: other sites

Value	Action	During forestry management, harvesting and FCE operations
Other sites: including findspots, unlocated sites (ie antiquarian records), previously destroyed sites (ie 'site of cairn') and possible sites of unknown type (ie 'possible mound').	No action necessary Indicate on all constraints mapping if deemed necessary.	Avoid if possible.

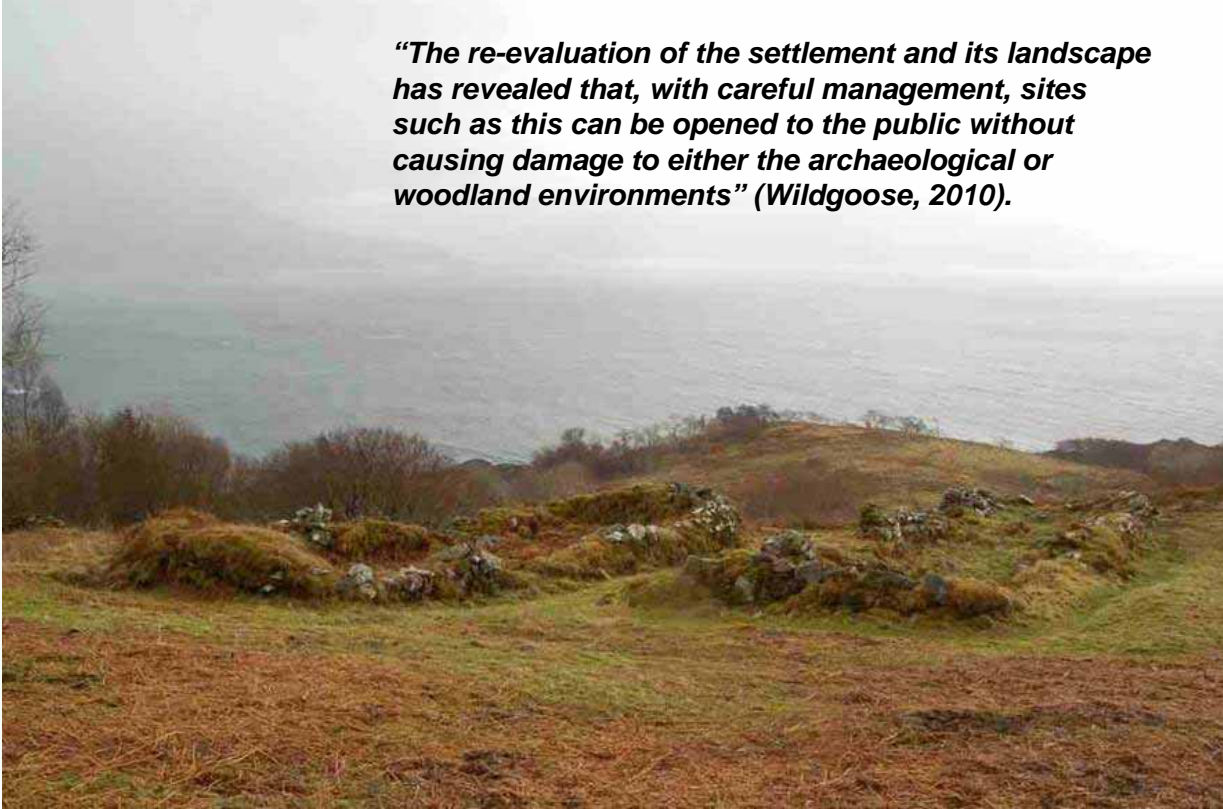


Although the site of this mill pond survives, the lade linking it to its mill has been destroyed.

Forest management: conservation grazing



“The re-evaluation of the settlement and its landscape has revealed that, with careful management, sites such as this can be opened to the public without causing damage to either the archaeological or woodland environments” (Wildgoose, 2010).



Leitir Fura township: archaeological survey to evidence responsible access and presentation





What have we learned ?

- There are no rules
- Each site on its merits
- Trees off forever not always the solution
- Setting of the woodland in historic landscape context is important

